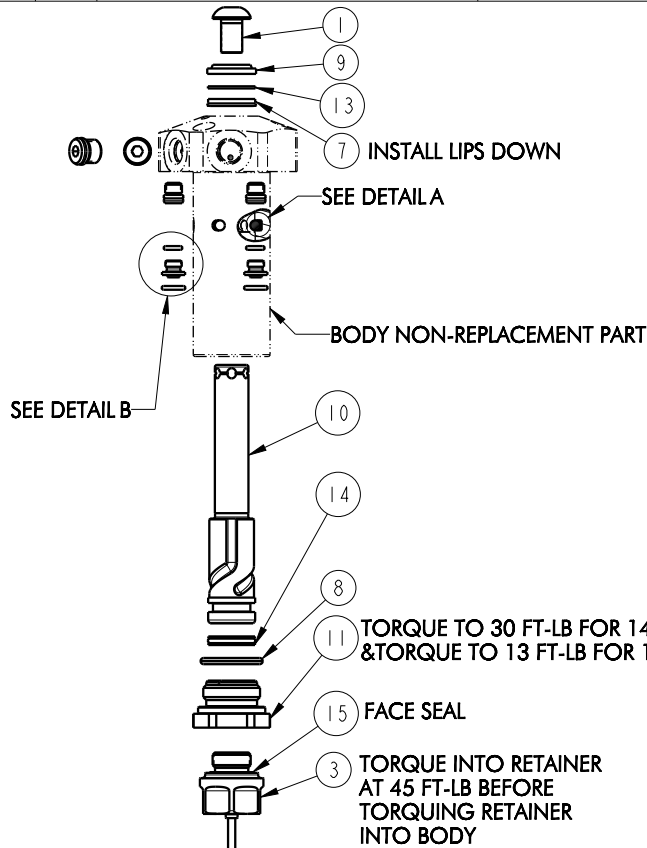
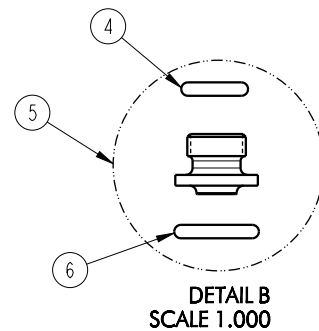
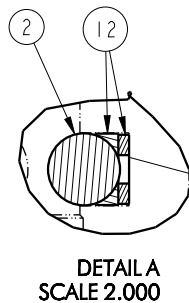


NO	QTY	DESCRIPTION	MODEL NUMBER		STANDARD SEAL KIT	FKM SEAL KIT
			14-6209-10-X-US	14-6213-10-X-US		
1	1	BUTTON HEAD CAP SCREW	21-4100-09	21-4100-39	NO	NO
2	3	BALL, STEEL ALLOY	23-6000-11	23-6000-02	YES	YES
3	1	SENSOR, ULTRASONIC	29-7402-00	29-7402-00	NO	NO
4	2	O-RING, ADAPTOR (STANDARD)	39-0500-36	39-0500-36	YES*	NO
	2	O-RING, ADAPTOR (FKM)	39-0510-31	39-0510-24	NO	YES*
5	2	ASSY, ADAPTER, SC, TF, MM	30-8711-20	30-8711-20	YES	YES
6	2	O-RING, MANIFOLD (STANDARD)	39-0500-42	39-0500-42	YES*	NO
	2	O-RING, MANIFOLD (FKM)	39-0510-25	39-0510-25	NO	YES*
7	1	SEAL, ROD (STANDARD)	39-0100-20	39-0110-46	YES	NO
	1	SEAL, ROD (FKM)	39-V100-20	39-V110-46	NO	YES
8	1	O-RING, RETAINER	39-0510-31	N/A	YES	YES
	1	GASKET	N/A	39-T550-03	YES	YES
9	1	WIPER, ROD, (FKM)	39-0530-01	39-0530-00	YES	YES
10	1	PLUNGER, LEFT HAND (SHOWN)	81-4000-93	81-4000-96	NO	NO
	1	PLUNGER, RIGHT HAND	81-4000-94	81-4000-97	NO	NO
	1	PLUNGER, STRAIGHT	81-4000-95	81-4000-98	NO	NO
11	1	RETAINER	81-4000-81	81-4000-82	NO	NO
12	3	BALL SEAT ASSEMBLY	90-1999-57	90-1999-58	YES	YES
13	1	BACK-UP RING, ROD	39-F540-01	39-F540-02	YES	YES
14	1	SEAL, PLUNGER (STANDARD)	39-H100-18	39-H110-30	YES	NO
	1	SEAL, PLUNGER (FKM)	39-V100-18	39-V110-30	NO	YES
15	1	SENSOR, FACE SEAL (STANDARD)	43-0000-40	43-0000-40	NO	NO
	1	SENSOR, FACE SEAL (FKM)	43-0000-41	43-0000-41	NO	NO
N/A	N/A	SEAL KIT (STANDARD)	60-1400-08	60-1400-10	INCLUDED IN KIT	
N/A	N/A	SEAL KIT (FKM)	6V-1400-08	6V-1400-10		



*NOTE: ITEMS INCLUDED IN ITEM NO 5



Lubricate all seals with clean hydraulic fluid prior to assembly.

PARTS LIST



VEKTEK, INC.
1334 E. SIXTH AVE. P.O. BOX 625
EMPORIA, KS. 66801 U.S.A.

ASSEMBLIES AFFECTED
14-6209-10-L-US, 14-6209-10-R-US, 14-6209-10-S-US
14-6213-10-L-US, 14-6213-10-R-US, 14-6213-10-S-US

PARTS LIST, ASSY, HS, TF, LS, DA, US

SIZE A
PL1456

REV A

FORM FEG035_PL_1456, REV. B

A	5531	RELEASE	ALS	11/5/24
REV	IN ACCORDANCE WITH ECN	EFFECTIVE DATE	REVISED BY	DATE
DRW BY:	ALS	DRAWING STATUS: Released		
DATE:	7/9/24	PRODUCTION APPROVED FOR RELEASED STATUS ONLY		

SHEET 1 OF 1